

# Castle Elementary Construction Chronicles

Addition and Remodel Progress Report

April 2019

## Happening this month

- Apply air-barrier to masonry walls in the new addition.
- Rough in underground plumbing
- Rough in mechanical/HVAC equipment
- Rough in above ceiling electrical
- Install brick facing on new addition
- Install built up asphalt roof
- Set Air Handling Unit #7 in new addition – Fly pieces in with crane
- Install drywall framing in new addition and Area C of building

## Coming next month

- Pour Slab on Grade in new addition
- Finish installing structural steel in new addition
- Continue to rough in above ceiling electrical
- Install drywall on framing and mud and tape seams
- Put up structural masonry

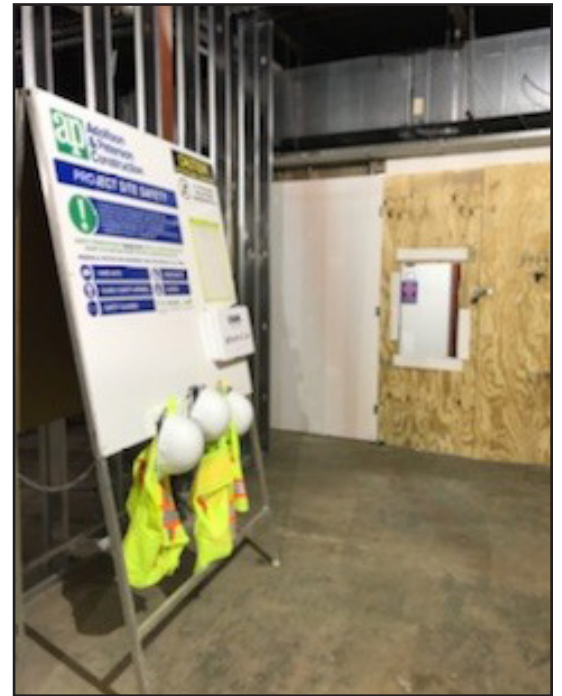
## Project photos



Left: Flying in air handling unit #7

Right: Plexiglass window for construction viewing

See more photos on p2



## Project Partners



# Castle Elementary Construction Chronicles

Addition and Remodel Progress Report

April 2019

## Project photos - page 2



Upper left: New addition - masonry walls

Upper right: Underground plumbing rough in

Lower left: Drywall framing - Area C

## Project Partners

