

eDistrict 622 -news

Wednesday, October 19, 2016

No school tomorrow or Friday, October 20-21

There is no school for students in the North St. Paul-Maplewood-Oakdale School District on Thursday, October 20 or Friday, October 21.

Levy 2016: Did you know?

That if the levy request fails, the school board has determined the lack of additional funding could result in:

- class size increases due to teacher cuts
- cuts to staff and programs that help struggling and advanced learners
- reduced support for academic and behavior interventions
- fewer electives at secondary level
- inability to invest in updated classroom technology
- reduced busing for middle school activities
- increased walking distance for students



Learn more about the levy proposal at www.isd622.org/levy2016.

Upcoming Events

Taste of District 622 coming November 5

The 6th annual *Taste of District 622* will take place on Saturday, November 5 from Noon – 2:00 pm at the Tartan High School cafeteria, 828 Greenway Avenue N, Oakdale.



Sponsored by the 622 Education Foundation and the National Honor Societies of both North and Tartan High Schools, there will be nineteen restaurants participating this year. There is also a wide variety of silent auction items to bid on.

As an added bonus, the Tartan All Night Senior Party Committee will also be hosting their annual Vendor Fair from 10am – 3 pm featuring a variety of vendors. It is the perfect way to spend a Saturday while coming together as a community to raise money for the 622 Education Foundation and the students in our district.

Tickets cost \$10 for adults and \$5 for students. Staff tickets are available for \$8. Buy two adult tickets and two student tickets for just \$25. Tickets can be purchased online or at the door. Visit www.tasteof622.eventbrite.com to buy your tickets today.

Tartan hosts 5th Annual Vendor & Craft Fair on Saturday, November 5

The 5th Annual Tartan Vendor & Craft Fair will be held in conjunction with the Taste of 622 on Sat. Nov. 5th from 10 am – 3 pm. The Fair will be in the Tartan Gymnasium. Great time to get some early Christmas shopping done!

VENDORS & CRAFTERS ARE NEEDED FOR THIS EVENT! If you, or someone you know, might have interest in exhibiting with us; Check us out on Facebook: Vendor & Craft Fair – Tartan High School or reach out to Mary Henehan at mlheneh@gmail.com. Cost to exhibit is \$40.00, 100% of which goes toward the All Night Senior Class Party.

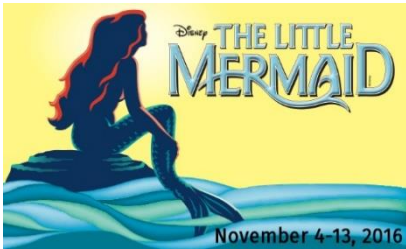
North High brings Footloose to stage November 3-5 and 11-12

Show times are scheduled for 7 p.m. on November 3-5 and 11-12, with matinees at 2 p.m. on Saturday, Nov. 5 and Nov. 12. Tickets are \$6 until October 29th. Tickets are \$7 (students and seniors) and \$9 (adults) after the 29th and at the door.

You can purchase pre-sale tickets online for only \$6 at www.northdrama.org. Cast and crew members are also taking pre-sale orders between now and Oct. 29.



Tartan Theatre to present Little Mermaid November 4-6 and 11-13



Tickets for the "The Little Mermaid" are priced from \$5-\$10. Performances are Nov. 4 – Nov. 13. Performances on Friday and Saturday are at 7 p.m. and Sundays at 2 p.m.

For tickets and information call 651-702-8814, visit www.tartantheatre.org, or email info@tartantheatre.org. Tartan High School is located at 828 Greenway Ave. N., Oakdale, MN 55128.

Halloween Hoedown, Outstanding Owls, Early Ojibwe Life Series and more!

Many community non-profit organizations offer meaningful enrichment activities and events to students and families within ISD 622.

Visit www.isd622.org/e-flyers often to see which activities might be of interest to your family. Fall activities flyers will be posted in a PDF format and available any time from any device.

e-flyers

Flyers posted include:

- Halloween Hoedown
- Outstanding Owls at Maplewood Nature Center
- Early Ojibwe Life Series
- Family Community Showcase
- Trunk or Treat!
- North Juniors Volleyball
- Maplewood Nature Center – Free Programs

Work for 622!

District 622 is hiring!

Visit www.isd622.org/employment to find out more about how to join the 622 staff!

Follow Careers@ISD622 on Twitter

Follow Careers@ISD622 on Twitter. To see a list of positions available with ISD 622, visit www.isd622.org/employment

Become a Reading or Math Corps tutor

ISD 622 is looking for reading or math tutors for the 2016-2017 school year. Successful candidates receive a stipend for 11 months of service through Minnesota Reading Corps or Minnesota Math Corps. Tutors also receive extensive training, support and general professional development opportunities. To learn how you can join the team of Minnesota Reading or Math Corps tutors, visit www.MinnesotaReadingCorps.org or the Minnesota Math Corps at www.minnesotamathcorps.org. Please **do not** apply via the district website.

Community Education News



Facility Use

Meeting or Event Space

Looking for a site for your next meeting or event? We have classrooms, gyms, cafeterias, pools, auditoriums and fields to accommodate most activities and group needs. Community groups and citizens are encouraged to use school facilities. [Click here](#) to learn more.

District 622 Preschool

Family Night

Join District 622 Preschool for a free Family Night on Thursday, October 27 from 5:00-7:00 pm at Beaver Lake Education Center. A light dinner will be served at 5:00, followed by a program for parents on child safety from 6:00-7:00. The presenter, Carol Watson, will discuss risk factors and how to talk to your children about protecting themselves from abuse, exploitation, abduction and running away from home. Childcare is provided during the presentation. Call 651-748-7280 for more information.

Adult Enrichment

Bringing Your New Dog Home

Considering adding a dog/puppy to your family? Learn how to choose the appropriate breed for your lifestyle. Discuss the pros and cons of purchasing from a breeder or adopting from a rescue shelter. Also discuss puppy vs. adult dog.

New owners, discuss how to introduce a new pet into the household successfully and establish rules, routines and boundaries. Wednesday, October 26, 7:30-8:30 pm, John Glenn Middle School, \$25. [Register here](#).

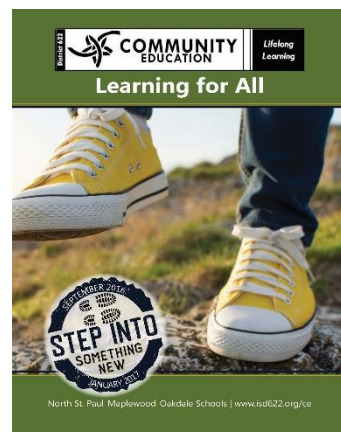


Youth Enrichment - Out of School Time

Driver's Education Parent Class

Parents/guardians of students taking Driver's Education are invited to attend our first FREE parent class at Tartan High School, Wednesday, November 9 from 6:30 - 8:00 pm.

This class is not required but qualifies the parent to receive a certificate that allows their student reduced practice time (from 50 to 40 hours). There is no fee for the classes but registration is required and can be done [here](#). At a minimum, Safeway strongly encourages parents to review its parent information and watch the online Parent Class Videos at www.safewaydrivingschool.com.



Follow 622 on Social Media



Please direct your questions or comments to feedback@isd622.org
To unsubscribe, send an e-mail message to 622e-news+unsubscribe@isd622.org
with the following in the body of the message: unsubscribe 622e-news

